

# COMFORTLINE®

Safe, comfortable and energy efficient.  
Can be thermostatically controlled to maintain a comfortable temperature all year round.



“So far the heaters have been great! The panels have been very reliable. With some time having passed since the project’s conception, they still look great and are working well”

Leyton Smith  
Innersphere (Interior Design Studio)  
Central Coast Leagues Club, Gosford NSW

“We have found in a school environment, the Comfortline Slimline Radiant Heating panels are camouflaged within an acoustic ceiling arrangement. Therefore they keep the heating panels out of reach from the students while maintaining a clean look.”

Daniel Smith  
Architectural Director, Thomson Adsett

“When building a new extension to our cake and coffee shop in Oakleigh, the need for an unobtrusive and efficient heat source was required to create a comfortable environment for our customers in the alfresco areas.

We installed a number of CL36 ceiling panels. We are very happy with the end result. Our customers tell us they are amazed at how comfortable they are when they visit us. The running costs are great and we are constantly recommending Comfortlines to builders and trades people when they visit out premises”

Nick Poupouzas  
Oakleigh Quality Cakes Pty Ltd

# COMFORTLINE AND SLIMLINE HEATING PANELS

THE IDEAL SOLUTIONS FOR HARD TO HEAT AREAS



## LIKE TO KNOW MORE?

Comfortline products are available through Electrical Wholesalers, Authorised Distributors and Accredited Installers Australia wide.

For more information or an obligation free quotation, please contact us or visit [www.comfortline.biz](http://www.comfortline.biz)

Freecall 1800 636 091

Sydney Office	Tasmanian Office
Phone 02 9997 7840	Phone 03 6273 9122
Fax 02 9997 7852	Fax 03 6273 9120

Victorian Office
Phone 03 5986 7388
Fax 03 5986 7399

[www.comfortline.biz](http://www.comfortline.biz)

All product information, specifications and measurements were correct at time of printing. Comfortline reserves the right to change the contents and specifications of their products when improvements/advancements are available. Pictures and colours shown are for illustration purposes only.

BROCCLN101.1

# COMFORTLINE®

# Comfortline offers a brand new range of energy efficient, ceiling mounted radiant heating panels. The natural choice if you are looking for quick, easy and efficient solutions for hard to heat areas.

**Comfortline and Slimline panels are ceiling mounted radiant heating panels. They offer brilliant energy-efficient radiant heat from above.**

The panel's elements heat up to a very high temperature giving off a lovely radiant heat below. Their effect is similar to what you would experience on a cold but sunny winter's day: It's lovely in the sunlight, even though the air temperature is cold.

They are ideal for indoor applications where radiant heat is preferred or where heating the air is too expensive.

They are also ideal for outdoor areas, creating comfortable environments for outdoor eating and entertaining, even during the cold winter months. They are very pleasant to sit under for long periods, unlike some high intensity gas 'mushroom' heaters, which



can cook you on one side while you shiver on the other. With Comfortline and Slimline you do not lose valuable floor space.

**APPLICATIONS:** You will see our panels in offices, factories, warehouses, workshops, garages, schools, churches, colleges, cafes, restaurants, nursing homes, hostels, community halls, shops, and homes.

## SLIMLINE PANELS – YOUR NATURAL CHOICE FOR INDOORS

**When you need heat for an indoor location and want to keep your floor space free, specify slimline for energy savings of at least 15% compared with standard electric convection heating.**

Slimline Panels owe their superior heat emission to unique surface treatments—known as 'thermoquartz' and 'thermocrysal.'

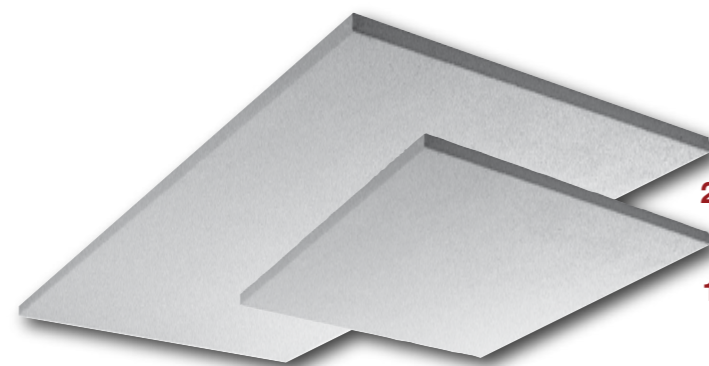
**MOUNTING:** Slimline panels fit neatly with new or existing suspended ceilings. They can be surface mounted directly to the ceiling with the brackets supplied or fitted into a T-bar ceiling.

Standard colour is white. Other colours are available by special order.

**WARRANTY:** 2 Years.

Technical Data for Slimline Panels							
Model	Length (mm)	Width (mm)	Height (mm)	Output (W)	Voltage (V)	IP Rating	Weight (kg)
CL350	592	592	35	350	240	44	5.8
CL750	1,192	592	35	750	240	44	11.1
CL750IN*	1,192	592	35	750	240	65	11.5

(\*Recommended for wet areas)



### SLIMLINE PANELS

- 1) 350W
- 2) 750W

## COMFORTLINE PANELS – QUICK, COMFORTABLE, ECONOMICAL

Comfortline panels emit up to 10% more usable heat than similar panels—thanks to a unique surface treatment. They are packed with rock wool insulation to minimise upward heat loss.

The radiant surfaces are designed in sections of naturally anodised aluminium, set in a galvanised steel case for strength. With an attractive modern design, the panels are plastic powder-coated in white. Other colours are available by special order.

**PRECISION COMFORT AND ECONOMY:** Higher output models (CL18 to CL36) can be switched separately, providing flexible control of heating. Panels can be wired for a low/high setting (panels with 2 elements) or a low/medium/high setting (panels with 3 elements). We recommend zoned time and temperature control of each heated indoor area, using electronic air-sensing thermostats.

**IMPRESSIVE LOW RUNNING COSTS.** A single high capacity Comfortline panel costs about 60c/hour to run.\* A typical mushroom heater on bottled gas will cost five times that— up to \$3.00/hour.^

**INSTALLATION:** Installation is easy in new or existing buildings. You can mount the panels directly on the ceiling (brackets supplied), or suspend them, it's all explained in our installation guide. Comfortline is perfect for ceilings as low as 2.4m, right up to 15m+, transforming large open areas such as shops, warehouses and workshops, which often suffer from inadequate heating.

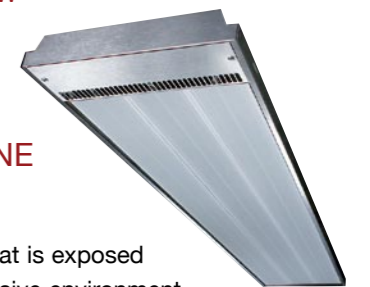
\* Assumes CL24 with electricity at 25c/kWhr  
^ Assumes \$25 refill for 9kg LPG bottle



### COMFORTLINE PANELS

- 3) 1 Panel - 980W/1,200W
- 4) 2 Panel - 2,000W/2,400W
- 5) 3 Panel - 3,300W/3,600W

### SALT SPRAY A PROBLEM? THINK COMFORTLINE STAINLESS



If the space you need to heat is exposed to salt spray or is in a corrosive environment, ask us about the stainless steel versions of Comfortline. They stand up to the corrosive actions of salt. They have a different profile and do not contain bulk insulation.

**WARRANTY:** 2 Years.

Technical Data for Comfortline Panels						
Model	Total Output (W)	Dimensions (mm)	Number of Heating Panels	Output Per Panel	IP Rating	Weight (kg)
CL09	980	1,500 x 155 x 60	1	980W	44	8.5
CL12	1,200	1,500 x 155 x 60	1	1,200W	44	8.5
CL18	2,000	1,500 x 256 x 60	2	1,000W	44	13.5
CL24	2,400	1,500 x 256 x 60	2	1,200W	44	13.5
CL30	3,300	1,500 x 357 x 60	3	1,100W	44	18.0
CL36	3,600	1,500 x 357 x 60	3	1,200W	44	18.0

Technical Data for Stainless Steel Comfortline Panels						
Model	Output (W)	Dimensions (mm)	Panels	Output Per Panel	IP Rating	Weight (kg)
CL09SS	980	1,500 x 130 x 50	1	980W	44	5.8
CL12SS	1,200	1,500 x 130 x 50	1	1,200W	44	5.8
CL18SS	2,000	1,500 x 230 x 50	2	1,000W	44	9.9
CL24SS	2,400	1,500 x 230 x 50	2	1,200W	44	9.9
CL30SS	3,300	1,500 x 330 x 50	3	1,100W	44	13.9
CL36SS	3,600	1,500 x 330 x 50	3	1,200W	44	13.9